

X-CAM A10-3H for GOPRO 3 Axis Gimbal User Manual



X-CAM A10-3H for GOPRO 3 Axis Gimbal has been finished with all the adjustments before launch the market, **READY TO RUN.**

Parameters

Weight: 280g (without GOPRO)

Stabilization frequency: 5200Hz

Input voltage(DC): 7.4v ~ 16.8v (2S ~ 4S Lipo)

Tilt travel: +-90 degree; Rolling travel: +-45 degree

YAW travel: 360 degrees with unlimited rotation

Built in AV output & Charging Module

Auto Pilot System supporting is not required

Built in 3 Gyroscope sensors & 1 Position sensor

Supports automatic location function

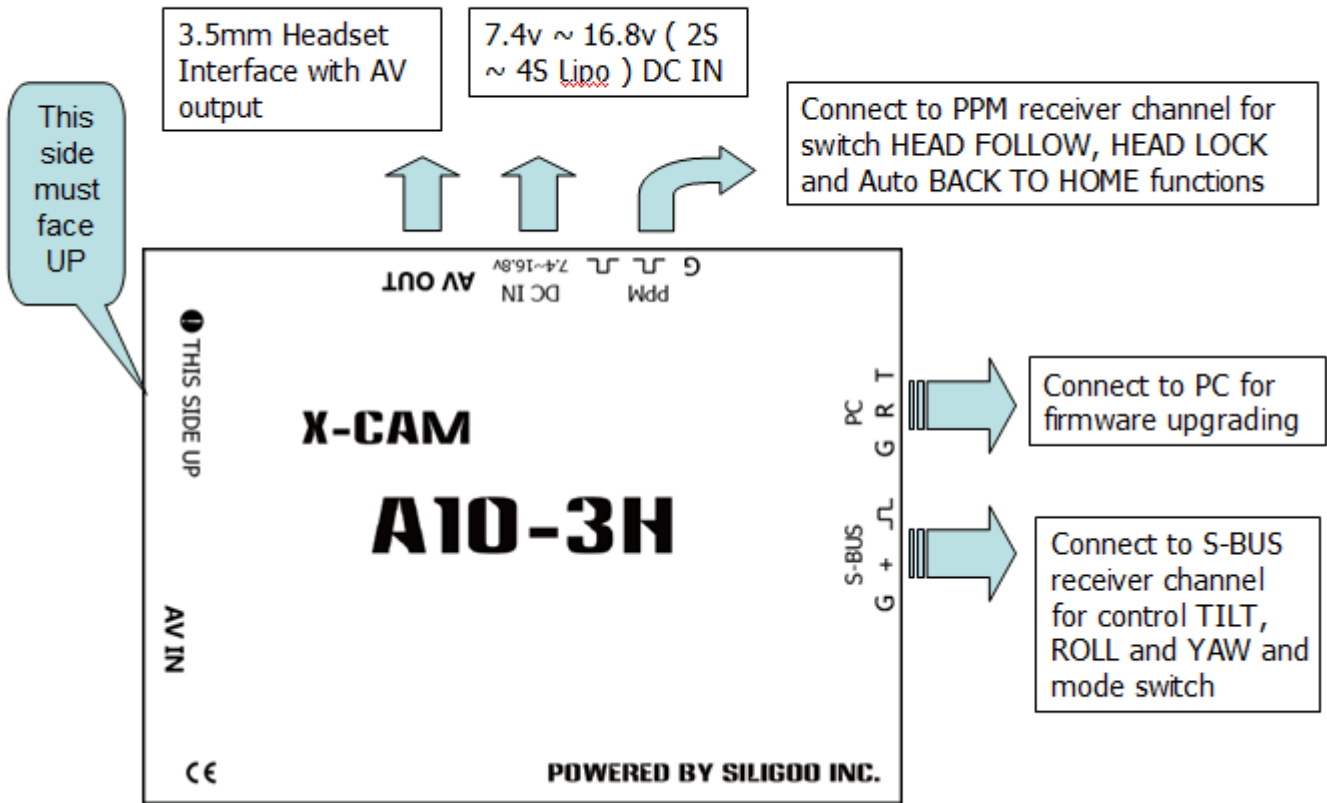
Accessories



- 1 x X-CAM A10-3H Gimbal Frame
- 1 x X-CAM A10-3H Controller
- 1 x USB Cable
- 1 x PPM Cable
- 5 x Damping balls
- 4 x Rubber rings
- 4 x Fastener rings



X-CAM A10-3H for GOPRO 3 Axis Gimbal Connection Instructions



The S-BUS output comes with full functions which have been defined channel number:

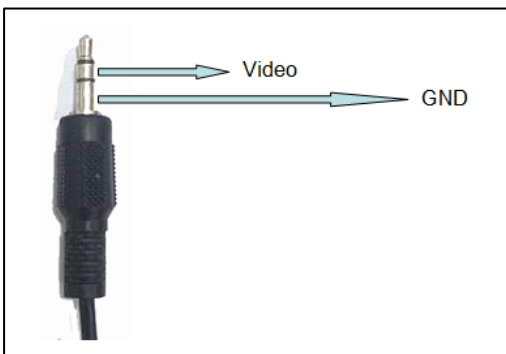
- Channel 1 : ROLL Control
- Channel 2: Return to HOME
- Channel 3: TILT Control
- Channel 4: YAW Control
- Channel 5: Mode switch

The recommend operation methods

1. Single control: Just connect PPM channel for HEAD FOLLOWING , HEAD LOCK and AUTO BACK TO HOME mode, S-BUS channel connection is not required, One receiver only.
2. Dual control: Only S-BUS output channel mode provides full functions. But 2 receivers are required

Notice: It does not required to supply the power to the receiver when under dual control mode, the A10-3H controller will supply the power to the receiver via the S-BUS.

The AV output adapter indicator: diagram

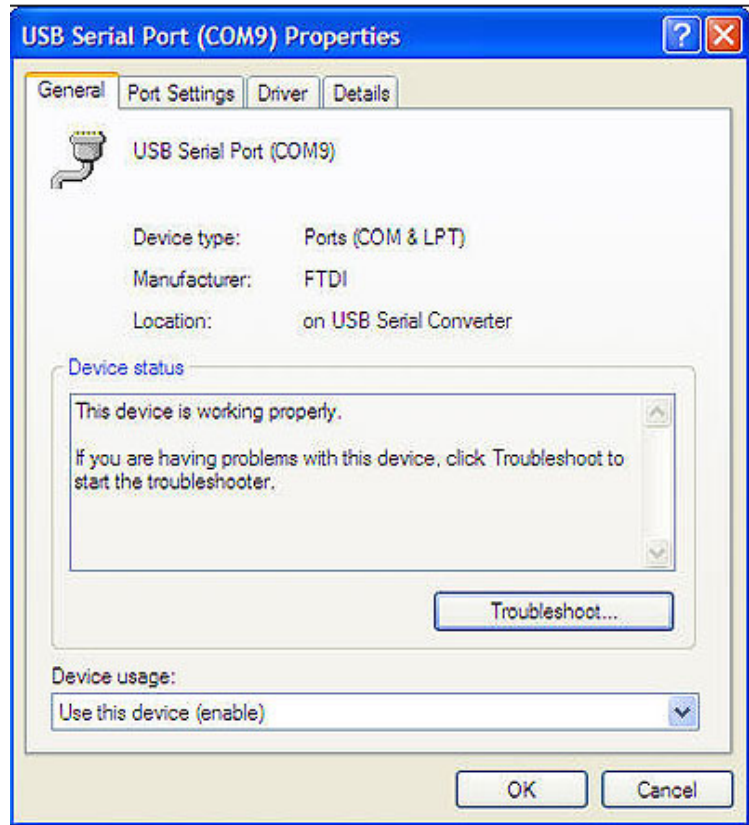


You may connect your own video transmitter here , the YELLOW wire is the video signal and the PINK wire is GND

PC Software

Connect with PC

Uses the USB adapter to connect with your PC , Normally the Windows can find the driver automatically, you could find the PORT number in the device Manager



Launch the X-CAM Gimbal Stabilization Module Assistant , choose the correct port number and click CONNECT



BEEP BEEP will be shouted after the connection succeed, the parameters will be read out automatically.

The parameters as below:

1. Gains

There are 2 gains, Position Gain and Acceleration Gain

Pos. Gain: Inclined the gimbal to one position slowly and watch the image is horizontal or not, if not just adjust the Pos. Gain.

Acc. Gain: After adjusting the Pos. Gain, Inclined the gimbal to one position quickly and watch the image is horizontal in time, if not just adjust the Acc. Gain.

Notice: the A10-3H has been finished the adjusting, does not need to adjust again in normally



2. Gimbal Control

The A10-3H provides 2 ways to control the TILT, Linear Mode or Tracking Mode

Linear Mode: Push the TILT stick to high or low for moving the camera mount to up or down until the stick back to midpoint

Tracking Mode: Push the TILT stick to high or low, the camera mount will follow the stick position.



Push speed: Setup the camera mount moving speed, high value set high speed; low value set low speed.

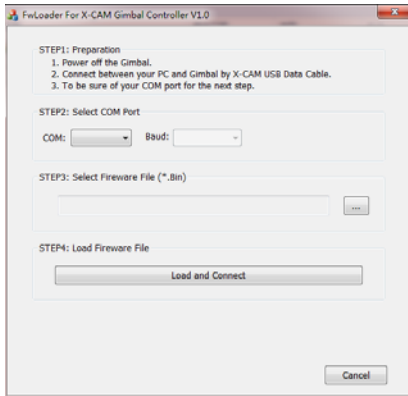


3. Sensor Offset

Do not set this value without the technical support from X-CAM



Firmware upgrade



1. Turn off the X-CAM A10-3H
2. Uses the USB cable to connect with your PC, Normally the windows can find the driver automatically, you will find the PORT number in the device manager.
3. Select the COM port number
4. Open the firmware file (*.bin)
5. Click "Load and Connect" button
6. Turn on the X-CAM A10-3H, it will upgrade the firmware automatically

Notice: Please do not touch anything and keep the power on during the upgrade, if the upgrade is break please back to STEP 1 and try again, normally it could be fix automatically. It will beep 4 times after upgrade and the system will be restarted.

Announcements

1. Do not touch the gimbal during the initialization after turn on, Keep the gimbal in quietude
2. Do not use BEC for the gimbal power, use 2~4S Lipo battery
3. Strongly recommend using 12mm tube to mount the gimbal
4. Make sure the center of gravity of the gimbal is correct before using.

Disclaimer

X-CAM A10-3H gimbals are covered by one year limited warranty. Please do not disassemble or modify mechanical structure in the warranty period. The customized program of X140B control module is based on A10-3H structure and motors, and all debugging has been completed in factory. Any direct or indirect damages caused by a user during use or damage will not be covered by our warranty, and X-CAM will not compensate the loss and the corresponding liability.

X-CAM does not take any responsibility toward any damage or loss in using A10-3H gimbal.